

Data Centre rooms under attack



☞ Fortune 1000 companies experienced losses of more than \$45 billion from thefts of proprietary information. (ASIS)

☞ It is estimated that full-time employees, as well as contractors with access to the workplace, are responsible for 75% of all cases involving corporate computer theft. (FBI, 1997)

The aspects PRO benefits...

- Unauthorised entry to IT cabinets or asset movement raises immediate alarm
- Servers, PCs, switching equipment are all monitored 24/7
- Records the movement of 3rd party personnel within facility
- Wireless
- Reduces Total Cost of Ownership of IT estate
- Saves time on engineer callouts by knowing exact location of equipment
- Centralised "Change Control" management
- "Real time" automated audit every 30 seconds, for lifetime of asset
- Enhances corporate integrity - more granular security down to individual components
- Integrates with third party systems and acts as a visible deterrent to thieves
- Fast modular installation and low maintenance

Our Customers say...

- "The cost of implementing the system was instantly justified"
- Norman Jinks, DfES
- "With Aspects we know the whereabouts of all our assets, all the time"
- Anna Williams, WPP
- "The system was installed and cost justified within 6 months"
- Chris Ferris, BT Ignite



The Technology ...

Technical Concepts

- Discreet, miniature, movement-sensing RF tags monitor servers & components
- Personnel cards track and record movement of engineers inside facility
- Small RF domino tags detect open/close of IT cabinet doors
- All tags have unique ID
- Tags communicate with RF sensors located inside the facility
- Sensors linked on daisy chain to aspects PRO
- Tag ranges up to 40 metres
- Tag battery life expectancy 5 years
- Tags reusable
- All tags are anti-tamper
- Radio emissions do not affect operability of computer equipment

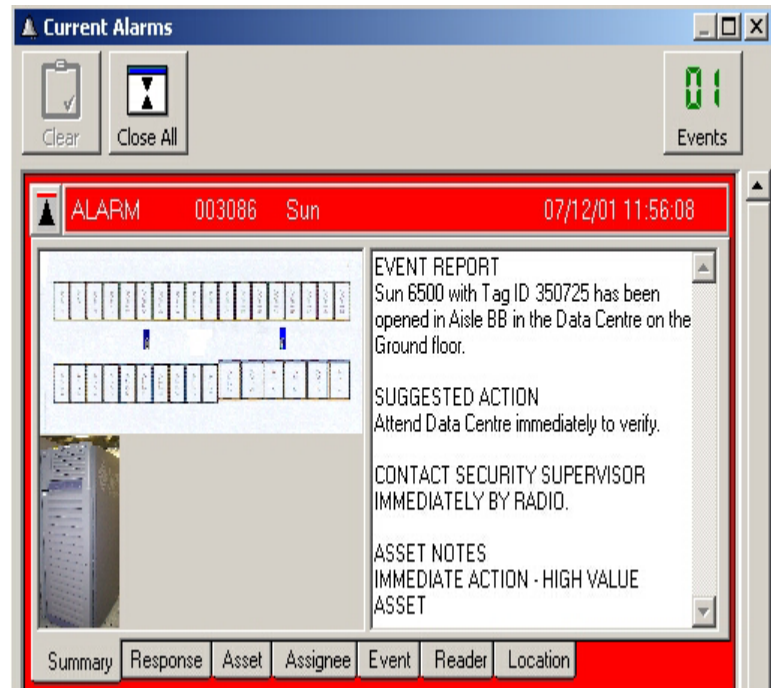


Proven Technology



aspects™

- Windows NT & 2000
- Real-time alarm graphics
- Easy-to-use authorisation for engineer maintenance
- Server alarm sensitivity individually programmable
- Historical log of all alarms, legitimate asset and engineer movement
- Fast tag/asset registration
- Real-time asset register 24/7/365
- Multi-user - password protected
- Analysis Tools



The Service ...

ISIS - Consultancy, Security, Audits and Professional Services
 Call us now for free consultation and advice **+44 20 7259 9212**
www.isis.co.uk